



**BEST DEAL**

# 9D GUILIN GUIZHOU

## **DIRECT JAKARTA – GUILIN setiap Sabtu**

QG8832 CGK – KWL 2000-0215 (nextday)  
QG8833 KWL – CGK 0315-0740

## **DIRECT SURABAYA – GUILIN setiap Selasa**

QG8830 SUB – KWL 1930 – 0205 (nextday)  
QG8831 KWL – SUB 0305 - 0720

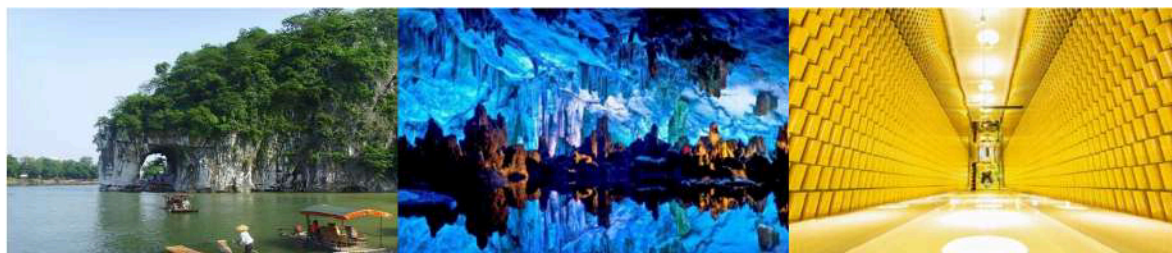
## **ITINERARY**

### **D1 JAKARTA/SURABAYA - GUILIN (-)**

- Berangkat menuju Guilin (Citilink Direct Flight) ETD 2000/1930, Arrived Guilin ETA 0215+1/0205+1
- Check in Hotel
- *Hotel : Golden Crown Hotel or similar 4\**

### **D2 : GUILIN (B/L/D)**

- Visit Reed Flute Cave
- Visit Osmanthus Commune (museum Teh Bunga Gui)
- *Hotel : Golden Crown Hotel or similar 4\**



### **D3: GUILIN - LIBO BY BUS (B/L/D)**

- Elephant Trunk Hill
- Transfer to Libo by Bus
- Visit Xiao Qi Kong & Da Qi Kong Scenic Area (size of seven hole scenic area) include battery car
- *Hotel : Tian Yumi Hotel or The Libo Sweet Corn Hotel or similar 4\**



### **D4: LIBO - ANSHUN BY BUS (B/L/D)**

- Visit The Largest Waterfall in Asia HUANGGUOSHU Waterfall (include battery car, one-way escalator)
- Doupotang Waterfall
- Tianxingqiao Scenic Area
- Transfer to Anshun by Bus
- *Hotel : Zhenning Wanxiang Hotel or similar 4\**

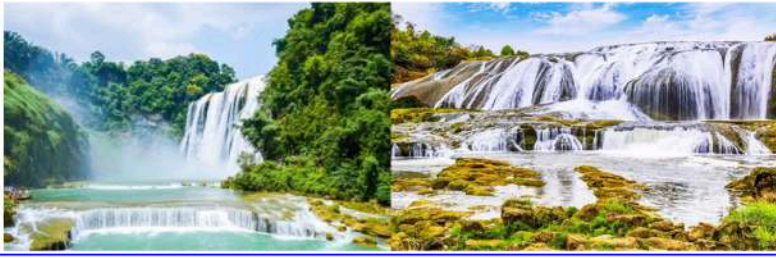
**Citilink**

Penerbangan Langsung Jakarta - Guilin (Setiap Sabtu) dan Surabaya - Guilin (Setiap Selasa)



**BEST DEAL**

# **9D GUILIN GUIZHOU**



## **D5: ANSHUN - KAILI BY BUS (B/L/-)**

- Visit The World's Largest Miao Village (Xijiang Qianhu Miao Village) include battery car
- Special experience Miao characteristics Long Table Banquet, high Mountains and flowing water,
- Miao highest courtesy – Toast
- **Note: Dinner by own arrangement**
- Hotel : Kaili Tenglong Hotel or Holiday Inn Hotel or similar 4\*



## **D6: KAILI - ZHAOXING BY BUS (B/L/D)**

- Visit Miao Mei Museum
- Kara Miao Village (unique pure wooden stilted building of Miao nationality)
- Transfer to Zhaoxing by Bus
- Visit Zhaoxing Dong Village (include battery car)
- Hotel : Zhaoxing 4 star hotel or similar



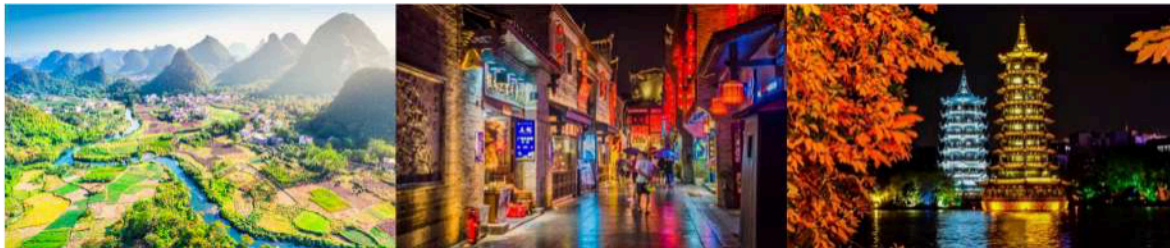


**BEST DEAL**

# 9D GUILIN GUIZHOU

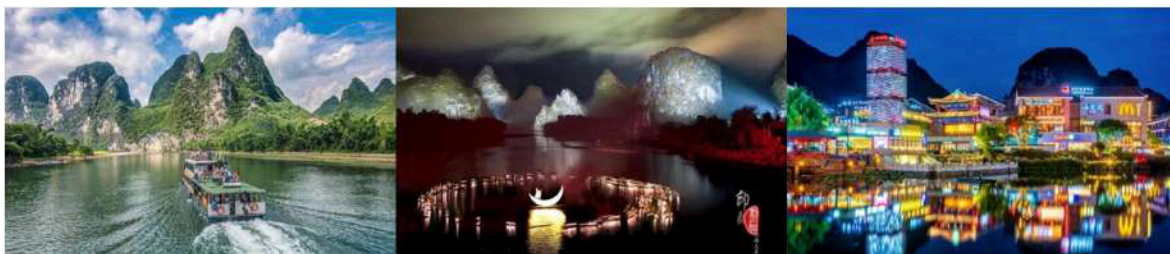
## **D7: ZHAOXING - GUILIN (B/L/-)**

- Transfer back to Guilin by Bus
- Arrived Guilin
- Optional : Four Lakes Night Cruise +300RMB/Pax
- Free time at Zhengyang walking street
- **Note: Dinner by own arrangement**
- Hotel : Golden Crown Hotel or similar 4\*



## **D8: GUILIN - YANGSHUO - GUILIN - AIRPORT OUT - JAKARTA/SURABAYA- (B/L/D)**

- Ten Miles Gallery
- Moon Hill (Photo stop)
- Free Time at West Street
- Optional : Li River Bamboo Raft and Liusanjie Show/Romance Show +380RMB/Pax
- Transfer out to Airport, ETD 0315/0305, end of service, ETA 0740/0720



**\*\*\*END OF PROGRAM\*\*\***

**\*\*Jadwal perjalanan dan penerbangan dapat berubah sewaktu-waktu tanpa pemberitahuan terlebih dahulu\*\***

**Citilink**

Penerbangan Langsung Jakarta - Guilin (Setiap Sabtu) dan Surabaya - Guilin (Setiap Selasa)



BEST DEAL

# 9D GUILIN GUIZHOU

Departure Date	Adult Twn/Trpl	Adult Sgl	Child W/Bed	Child NoBed	VOA	Tips
MAY	9,999	12,488	9,999	9,488	900	775

**Catatan :**

\*Masuk toko wajib : Chinese Medicine, An Gong Store, Silk Store

\*Harga dalam ribu RUPIAH (IDR .000)

**BIAYA TOUR TELAH TERMASUK:**

- Tiket pesawat internasional kelas ekonomi (non-refundable, non-endorsable, non-reroutable).
- Airport Tax International (Subject to Change)
- Makan sesuai acara (MP = Makan Pagi, MS = Makan Siang, MM = Makan Malam)
- Akomodasi, menginap di Hotel 4\* dengan kondisi 1kamar diisi oleh 2 orang dewasa (twin share).
- Bagasi gratis 1 pc dengan berat maksimum 20 kg dan hand carry gratis 1 pc dengan berat maksimum 7 kg.
- Tour Leader yang berpengalaman
- BUS

**BIAYA TOUR TIDAK / BELUM TERMASUK :**

- Group Visa to China (Guilin) @ IDR 900,000
- Pengeluaran pribadi seperti: mini bar, room service, telepon, laundry, dll.
- Tour atau show tambahan (optional) yang diadakan selama perjalanan @ RMB 300 s.d. RMB 500 per show
- Biaya kelebihan berat bagasi (excess / extra baggage)
- Tipping (untuk Guide dan Driver serta Tour Leader) sebesar Rp. 775.000,- dibayar pada saat pelunasan tour
- Biaya Single Supplement bagi Peserta yang menempati 1 kamar sendiri.
- TIKET TIDAK BISA EXTEND
- Karantina di China (hanya jika diperlukan)
- Asuransi perjalanan

**SYARAT PEMBUATAN GROUP VISA TO CHINA (GUILIN):**

- Scan passport halaman 2 dan 3 (yang ada foto dan biodata), tegak lurus dan satu layar penuh.
- Masa berlaku passport minimal 6 bulan sebelum tanggal keberangkatan.
- Pas Foto terbaru (3 bulan terakhir), ukuran 43 mm (lebar) x 62 mm (tinggi), latar belakang putih, tanpa bingkai
- **Penting:** hasil scan passport dan file pas foto harus dalam format JPG atau JPEG, bukan PDF atau yang lain.