



9D GUILIN CHONGQING

From Jakarta direct to Guilin (setiap Sabtu)

QG8832 CGK – KWL 2000-0215 (nextday)

QG8833 KWL – CGK 0315-0740

From Surabaya direct to Guilin (setiap Selasa)

QG8830 SUB – KWL 1930 – 0205 (nextday)

QG8831 KWL – SUB 0305 - 0720

ITINERARY

D1: JAKARTA/SURABAYA - GUILIN (-)

- Berangkat menuju Guilin (Citilink Direct Flight) ETD 2000/1930, Arrived Guilin ETA 0215+1/0205+1
- Check in Hotel

Hotel : Golden Crown Hotel or similar 4*

D2: GUILIN (B/L/D)

- Elephant Trunk Hill
- Visit Reed Flute Cave, Visit Osmanthus Commune (museum Teh Bunga Gui)

Hotel : Golden Crown Hotel or similar 4*



D3: GUILIN - CHONGQING BY BULLET TRAIN (B/L/D)

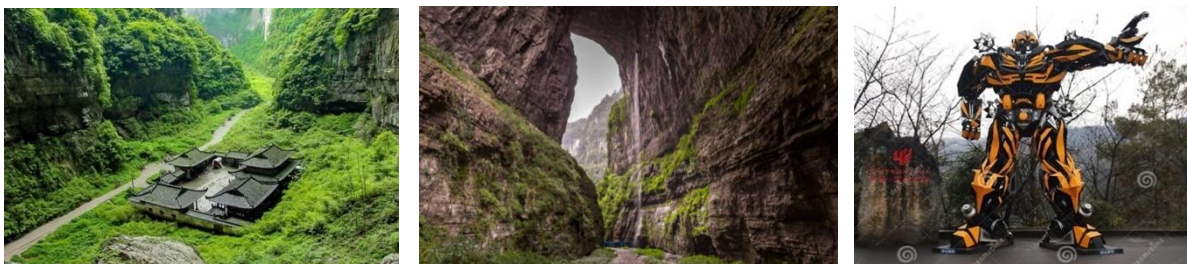
- Transfer to Chongqing by **Bullet Train G3750 11.42-15.51**
- Arrived Chongqing, Dinner then check in Hotel for rest

Hotel: Nanfang Junlin Hotel (Chongqing Carlton Hotel) or similar 4*

D4: CHONGQING - WULONG BY BUS (B/L/D)

- Transfer to Wulong by Bus
- Visit Three Natural Bridges (included electric car & elevator)

Hotel: Yiyun Dujia Hotel (Yiyun Holiday Hotel) or similar 4*



D5: WULONG - CHONGQING BY BUS (B/L/D)

- Visit Fairy Mountain (include mini train)
- Transfer to Chongqing by Bus
- Visit Hongya Cave
- Visit Jiefangbei Street

Hotel: Nanfang Junlin Hotel (Chongqing Carlton Hotel) or similar 4*



D6: CHONGQING - GUILIN BY BULLET TRAIN (B/L/D)

- Visit Three Gorges Museum
- Visit Chongqing People's Congress Hall
- Liziba Light Rail Station (viewing)
- Transfer to Guilin by **Bullet Train G3749 14.45-18.43**
- Arrived Guilin then check-in Hotel

Hotel : Golden Crown Hotel or similar 4*



D7: GUILIN (B/L/-)

- Lujia Village
- Rongshan Lake, Big Banyan Tree, Old South Gate
- Sun and Moon Pagoda
- **Optional : Four Lakes Night Cruise +300RMB/Pax**
- Free time at Zhengyang walking street

Note: Dinner by own arrangement

Hotel : Golden Crown Hotel or similar 4*



D8: GUILIN - YANGSHUO - GUILIN - AIRPORT OUT - JAKARTA/SURABAYA (B/L/D)

- Bamboo Raft or Lijiang Cruise (short line)
- Free Time at West Street
- **Optional : Liusanjie Show/Romance Show +300RMB/Pax**
- Transfer out to Airport, ETD 0315/0305, end of service, ETA 0740/0720



END OF PROGRAM

Jadwal perjalanan dan penerbangan dapat berubah sewaktu-waktu tanpa pemberitahuan terlebih dahulu



9D GUILIN CHONGQING

Departure Date (2024) FROM JAKARTA	Airlines	Adult (Twin/Triple)	Adult (Single)	Child (Twin/X-Bed)	Child (No Bed)	Visa (on Arrival)	Tipping (D, LG, TL)
MAY : 4, 11, 18, 25	Citilink	13,699	16,199	13,699	13,199	900	775
JUN : 1, 8	Citilink	13,699	16,199	13,699	13,199	900	775
JUN : 15, 22, 29	Citilink	15,699	18,199	15,699	15,199	900	775
JUL : 6, 13, 20, 27	Citilink	13,699	16,199	13,699	13,199	900	775
AUG : 3, 10, 17, 24, 31	Citilink	13,699	16,199	13,699	13,199	900	775

Departure Dates (2024) FROM SURABAYA	Airlines	Adult (Twin/Triple)	Adult (Single)	Child (Twin/X-Bed)	Child (No Bed)	Visa (on Arrival)	Tipping (D, LG, TL)
MAY : 7, 14, 21, 28	Citilink	13,699	16,199	13,699	13,199	900	775
JUN : 4, 11	Citilink	13,699	16,199	13,699	13,199	900	775
JUN : 18, 25	Citilink	15,699	18,199	15,699	15,199	900	775
JUL : 2	Citilink	15,699	18,199	15,699	15,199	900	775
JUL : 9, 16, 23, 30	Citilink	13,699	16,199	13,699	13,199	900	775
AUG : 6, 13, 20, 27	Citilink	13,699	16,199	13,699	13,199	900	775

Catatan :

- *Masuk toko wajib : Silk, An Gong
- *Harga dalam ribu RUPIAH (IDR .000)

BIAYA TOUR TELAH TERMASUK:

- Tiket pesawat internasional kelas ekonomi (non-refundable, non-endorsable, non-reroutable).
- Airport Tax International (Subject to Change)
- Makan sesuai acara (MP = Makan Pagi, MS = Makan Siang, MM = Makan Malam)
- Akomodasi, menginap di Hotel 4* dengan kondisi 1kamar diisi oleh 2 orang dewasa (twin share).
- Bagasi gratis 1 pc dengan berat maksimum 20 kg dan hand carry gratis 1 pc dengan berat maksimum 7 kg.
- Tour Leader yang berpengalaman
- BUS

BIAYA TOUR TIDAK / BELUM TERMASUK :

- Group Visa to China (Guilin) @ IDR 900,000
- Pengeluaran pribadi seperti: mini bar, room service, telepon, laundry, dll.
- Tour atau show tambahan (optional) yang diadakan selama perjalanan @ RMB 300 s.d. RMB 500 per show
- Biaya kelebihan berat bagasi (excess / extra baggage)
- Tipping (untuk Guide dan Driver serta Tour Leader) sebesar Rp. 775.000,- dibayar pada saat pelunasan tour
- Biaya Single Supplement bagi Peserta yang menempati 1 kamar sendiri.
- TIKET TIDAK BISA EXTEND
- Karantina di China (hanya jika diperlukan)
- Asuransi Perjalanan

SYARAT PEMBUATAN GROUP VISA TO CHINA (GUILIN):

- Scan pssport halaman 2 dan 3 (yang ada foto dan biodata), tegak lurus dan satu layar penuh.
- Masa berlaku passport minimal 6 bulan sebelum tanggal keberangkatan.
- Pas Foto terbaru (3 bulan terakhir), ukuran 43 mm (lebar) x 62 mm (tinggi), latar belakang putih, tanpa bingkai
- **Penting:** hasil scan passport dan file pas foto harus dalam format JPG atau JPEG, bukan PDF atau yang lain.